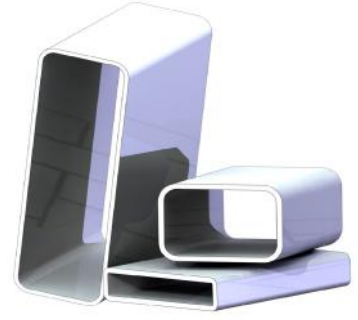


# TUBI A SEZIONE RETTANGOLARE

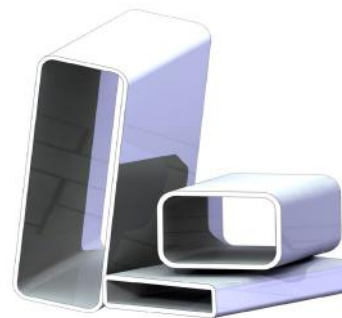
Rectangular cross-section tubes



SPESSORE -Wall thickness - Epaisseur - Wanddicke ( mm )															
AxB		DERIVATO	0,5	0,6	0,7	0,8	0,9	1	1,2	1,5	1,8	2	2,5	3	
( inches )	( mm )	D ( mm )	PESO - Poids - Weight - Gewicht : ( Kg/ml )												
	10x5	9,5	0,111	0,132	0,152	0,172	0,191	0,210	0,246						
	15x10	16	0,191	0,228	0,264	0,300	0,335	0,370	0,438	0,536	0,630	0,691			
	17x10	17	0,203	0,243	0,281	0,320	0,357	0,395	0,468	0,573	0,675	0,740			
	18x11	18	0,216	0,257	0,299	0,339	0,380	0,419	0,497	0,610	0,719	0,789			
	20x10	19	0,228	0,272	0,316	0,359	0,402	0,444	0,527	0,647	0,764	0,838			
	20x12	20	0,240	0,287	0,333	0,379	0,424	0,469	0,556	0,684	0,808	0,888			
	20x15	22	0,265	0,317	0,368	0,418	0,468	0,518	0,616	0,758	0,897	0,986			
	24x10	22	0,265	0,317	0,368	0,418	0,468	0,518	0,616	0,758	0,897	0,986			
	25x10	22	0,265	0,317	0,368	0,418	0,468	0,518	0,616	0,758	0,897	0,986			
	25x12	23,5		0,339	0,394	0,448	0,502	0,555	0,660	0,814	0,963	1,060			
	25x15	25		0,361	0,419	0,477	0,535	0,592	0,704	0,869	1,030	1,134			
	25x20	28		0,405	0,471	0,537	0,601	0,666	0,793	0,980	1,163	1,282			
	30x10	25		0,361	0,419	0,477	0,535	0,592	0,704	0,869	1,030	1,134			
	30x15	28		0,405	0,471	0,537	0,601	0,666	0,793	0,980	1,163	1,282			
	30x16	28		0,405	0,471	0,537	0,601	0,666	0,793	0,980	1,163	1,282			
	30x18	30		0,435	0,506	0,576	0,646	0,715	0,852	1,054	1,252	1,381			
	30x20	32		0,465	0,540	0,616	0,690	0,765	0,911	1,128	1,341	1,480			
	30x25	35			0,592	0,675	0,757	0,838	1,000	1,239	1,474	1,628			
	30x27	36				0,694	0,779	0,863	1,030	1,276	1,518	1,677			
	30x28	38				0,734	0,823	0,912	1,089	1,350	1,607	1,776			
	33x20	33			0,558	0,635	0,712	0,789	0,941	1,165	1,385	1,529			
13/8"x5/8"	34.9x15.8	32			0,540	0,616	0,690	0,765	0,911	1,128	1,341	1,480			
	35x10	28		0,405	0,471	0,537	0,601	0,666	0,793	0,980	1,163	1,282			
	35x11	30								1,054	1,252	1,381			
	35x15	32		0,465	0,540	0,616	0,690	0,765	0,911	1,128	1,341	1,480			
	35x16	32		0,465	0,540	0,616	0,690	0,765	0,911	1,128	1,341	1,480			
	35x20	35			0,592	0,675	0,757	0,838	1,000	1,239	1,474	1,628	2,004		
	35x25	38				0,734	0,823	0,912	1,089	1,350	1,607	1,776	2,189		
	35x30	42					0,912	1,011	1,207	1,498	1,785	1,973	2,435	2,885	
11/2"x3/4"	38.1x19.05	36					0,779	0,863	1,030	1,276	1,518	1,677	2,065		
11/2x1"	38.1x25.4	40					0,868	0,962	1,148	1,424	1,696	1,874	2,312		
	38,1x63,5	63,5						1,541	1,844	2,294	2,739	3,033	3,761		
	40x10	32		0,465	0,540	0,616	0,690	0,765	0,911	1,128	1,341	1,480			
	40x15	35			0,592	0,675	0,757	0,838	1,000	1,239	1,474	1,628			
	40x20	38				0,734	0,823	0,912	1,089	1,350	1,607	1,776	2,189		
	40x25	42					0,912	1,011	1,207	1,498	1,785	1,973	2,435		
	40x27	42					0,912	1,011	1,207	1,498	1,785	1,973	2,435		
	40x30	45					0,979	1,085	1,296	1,609	1,918	2,121	2,620	3,107	
	40x35	48					1,045	1,159	1,385	1,720	2,051	2,269	2,805	3,329	
	45x10	35			0,592	0,675	0,757	0,838	1,000	1,239	1,474	1,628	2,004		
	45x15	38				0,734	0,823	0,912	1,089	1,350	1,607	1,776	2,189		
	45x20	42					0,912	1,011	1,207	1,498	1,785	1,973	2,435		
	45x25	45					0,979	1,085	1,296	1,609	1,918	2,121	2,620		
	45x30	48					1,045	1,159	1,385	1,720	2,051	2,269	2,805	3,329	
	45x35	50						1,208	1,444	1,794	2,140	2,368	2,929	3,477	
	45x40	55						1,332	1,592	1,979	2,362	2,614	3,237	3,847	
	50x10	38				0,734	0,823	0,912	1,089	1,350	1,607	1,776			
	50x15	42					0,912	1,011	1,207	1,498	1,785	1,973			
	50x20	45					0,979	1,085	1,296	1,609	1,918	2,121			
	50x25	48					1,045	1,159	1,385	1,720	2,051	2,269	2,805		
	50x30	50						1,208	1,444	1,794	2,140	2,368	2,929	3,477	
	50x35	55						1,332	1,592	1,979	2,362	2,614	3,237	3,847	
	50x40	57						1,381	1,651	2,053	2,450	2,713	3,360	3,995	
	50x45	60						1,455	1,740	2,164	2,584	2,861	3,545	4,217	
	58x10	43						0,934	1,036	1,237	1,535	1,829	2,022		
	58x14	45						0,979	1,085	1,296	1,609	1,918	2,121		
	58x18	47							1,134	1,355	1,683	2,006	2,220	2,744	
	58x19	48							1,159	1,385	1,720	2,051	2,269	2,805	
	58x22	50							1,208	1,444	1,794	2,140	2,368	2,929	
	58x25	52							1,258	1,503	1,868	2,228	2,466	3,052	
	58x30	55							1,332	1,592	1,979	2,362	2,614	3,237	3,847
	60x10	45					0,979	1,085	1,296	1,609	1,918	2,121			
	60x15	48						1,045	1,159	1,385	1,720	2,051	2,269	2,805	
	60x20	50							1,208	1,444	1,794	2,140	2,368	2,929	

# TUBI A SEZIONE RETTANGOLARE

Rectangular cross-section tubes



SPESSORE -Wall thickness - Epaisseur - Wanddicke ( mm )														
AxB		DERIVATO	0,5	0,6	0,7	0,8	0,9	1	1,2	1,5	1,8	2	2,5	3
( inches )	( mm )	D ( mm )	PESO - Poids - Weight - Gewicht : ( Kg/ml )											
	60x25	55						1,332	1,592	1,979	2,362	2,614	3,237	
	60x30	57						1,381	1,651	2,053	2,450	2,713	3,360	3,995
	60x35	60						1,455	1,740	2,164	2,584	2,861	3,545	4,217
	60x40	63,5						1,541	1,844	2,294	2,739	3,033	3,761	4,476
	60x50	70							2,036	2,534	3,027	3,354	4,162	4,957
	70x11	52						1,258	1,503	1,868	2,228	2,466	3,052	
	70x15	55						1,332	1,592	1,979	2,362	2,614	3,237	
	70x20	57							1,651	2,053	2,450	2,713	3,360	
	70x25	60							1,740	2,164	2,584	2,861	3,545	
	70x30	63,5							1,844	2,294	2,739	3,033	3,761	4,476
	70x40	70							2,036	2,534	3,027	3,354	4,162	4,957
	70x50	76							2,214	2,756	3,294	3,650	4,532	5,401
	80x15	60							1,740	2,164	2,584	2,861	3,545	
	80x20	63,5							1,844	2,294	2,739	3,033	3,761	
	80x30	70							2,036	2,534	3,027	3,354	4,162	4,957
	80x40	76							2,214	2,756	3,294	3,650	4,532	5,401
	80x60	89							2,598	3,237	3,871	4,291	5,333	6,363
	90x30	76							2,214	2,756	3,294	3,650	4,532	5,401
	90x60	95							2,776	3,459	4,137	4,587	5,703	6,807
	90x70	102							2,983	3,718	4,448	4,932	6,135	7,324
	100x20	76							2,214	2,756	3,294	3,650	4,532	
	100x40	89							2,598	3,237	3,871	4,291	5,333	6,363
	100x50	95								3,459	4,137	4,587	5,703	6,807
	100x60	102								3,718	4,448	4,932	6,135	7,324
	110x30	89								3,237	3,871	4,291	5,333	6,363
	110x50	102								3,718	4,448	4,932	6,135	7,324
	120x30	95								3,459	4,137	4,587	5,703	6,807
	120x40	102								3,718	4,448	4,932	6,135	7,324